

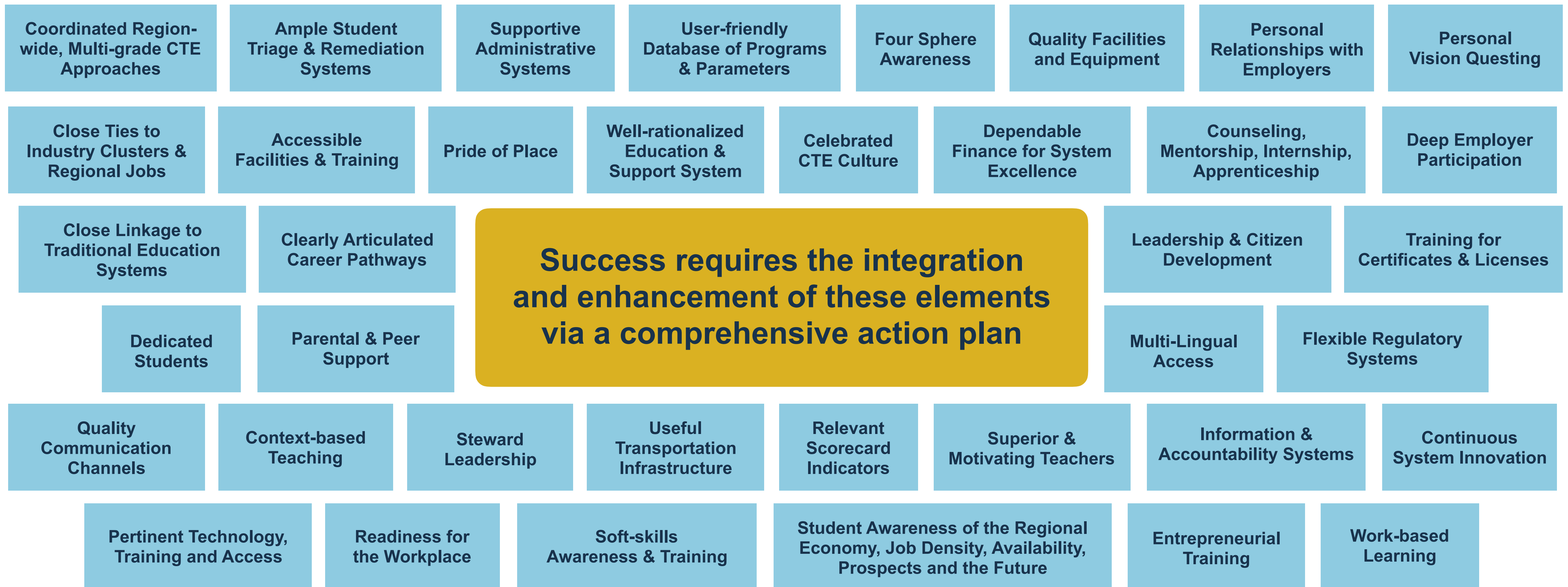


# **BOUNDARY-CROSSING AND COLLABORATION**

*The Most Challenging Community Value*



# A REALITY: IMPORTANT ISSUES ARE VERY COMPLEX



## EXAMPLE: SOME CORE ISSUES FOR A WORLD-CLASS CTE ECOSYSTEM

## Your Leadership Assignment

*“Organize and sustain the necessary forces to truly move the needle on a complex major community issue”*

# A FEW STIPULATIONS

---

- Many organizations and individuals will have to work together to accomplish that
- You will have little to no control over any of them
- They will have conflicting theories about what needs to be done....and when
- Effective communication will be essential....and very difficult to articulate
- For many, working with others will seem to be a high-risk, low-reward activity....unless they're in charge
- Leaders may enthusiastically sign up...but their boards, staffs and bureaucracies may not
- The relevant electeds may be split, non-supportive, or outright hostile....for reasons which are unpredictable and possibly unfathomable
- Key people or institutional priorities may change during the course of the initiative
- There will be little to no entrepreneurial money available
- Money that **is available** will be **required** to be **spent for anything** but quality leadership
- Related works may already be in progress....only some of which will be coordinated....or adequate for the mission....but many will allege otherwise
- Many will think you don't get it...it's impossible...or you're out for personal gain

***ARE YOU READY TO SIGN UP FOR THAT?***

# HOW CAN WE MAKE IT WORK?

---

- These are some of the reasons that the Community Value “*Boundary Crossing and Collaboration*” is so important to outcomes....but so difficult in actuality
- When we take on hard things....we need be able to honestly answer the question: “What would keep us from working together?”
- Barriers are real for everyone.....and most times they’re honest and understandable
- Functionality demands we get much better at calling out those realities
- If folks are thoughtful about that, then work-around’s can be devised.... and appropriate expectations set....so we don’t waste time and resource heading down false paths....or letting one another down
- Boundary Crossing and Collaboration is a tough assignment for everyone....yet true solutions to impactful things are likely impossible without it
- And....it’s why the other Community Values, and a holistic approach, is so important. Indeed, that may be the best, and perhaps the only, antidote to continued systemic dysfunction